



# The Pet Press

From The Editor  
I'm Baaack! 3

Readers' Views/News 4  
DOG TRAINERS 4  
Sleepover At The Shelter 4

Announcements 6  
S/N Help & More 6

Your Pet's Health 7-10  
Valley Fever 8  
More S/N Programs 8

Maxx's Headlines 11

Animal Help 13-18  
On-Going Adoptions 13  
Animal Help Groups 14  
Rattlesnake Classes 15  
Pet of the Month 15  
Burbank Teens Classes 16  
Therapy Dog Programs 16  
Animal Shelters 18

Pet Care Tips 19-20  
PET SITTERS, etc 19-20  
July 4th - Tips 19

Pet Events 23

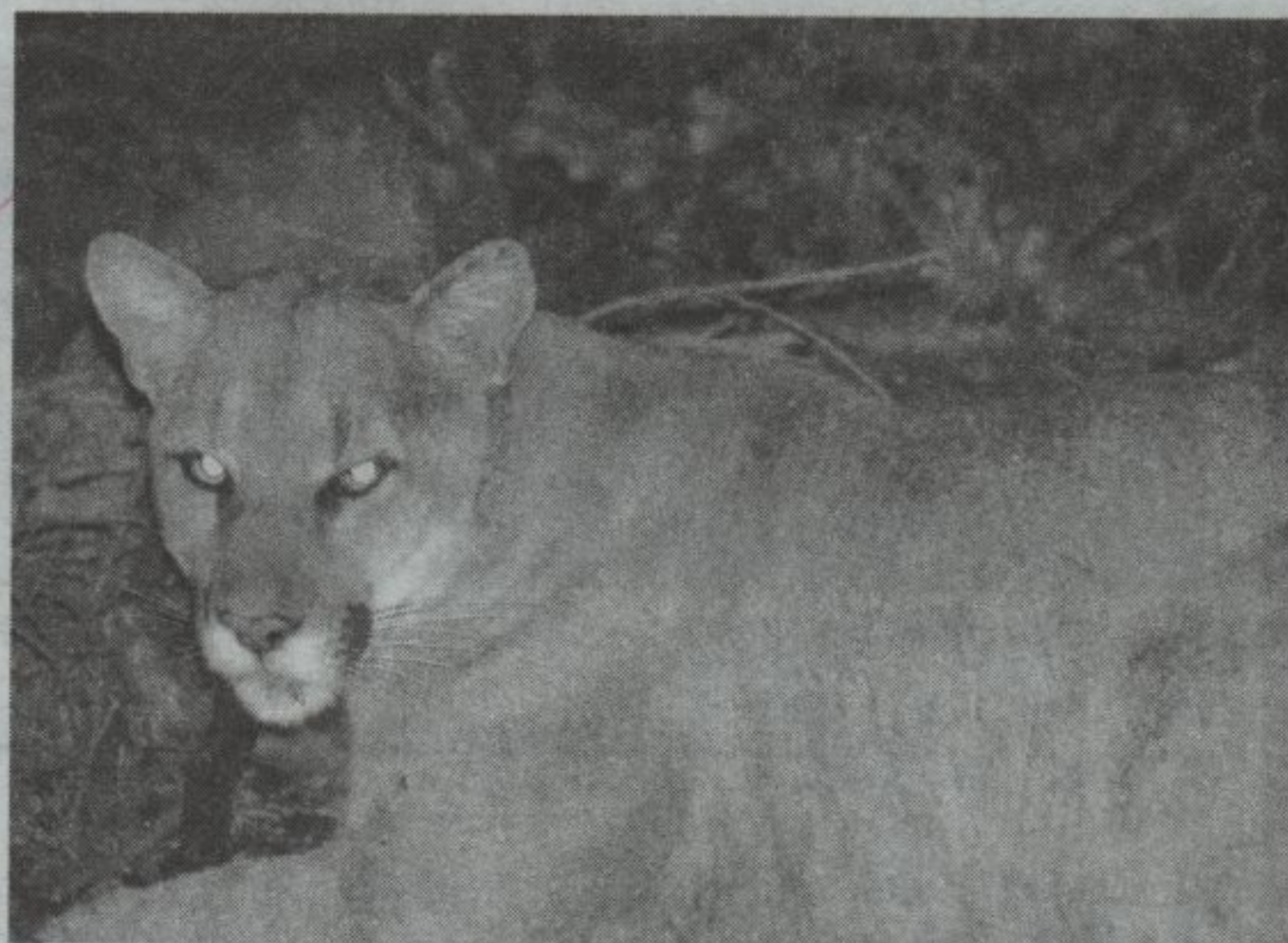
*For The People Who Love Animals And  
The Animals Who Need To Be Loved*

Vol.16 - Issue 7 **FREE** June-July, 2015

## P-22

### The Majestic Mountain Lion of Griffith Park

*By Lisa Lyons*



It was February 2012 when hidden cameras photographing wildlife in the Hollywood Hills revealed something that the Griffith Park Connectivity Study, a team of scientists and wildlife experts, had been waiting on for years - a young male mountain lion in all his tawny glory.

Miguel Ordenana, a researcher for the Natural History Museum of LA and member of the Griffith Park Connectivity Study, recalls he was routinely sorting through thousands of images - mostly of coyotes and deer - when he suddenly spotted what looked like a cougar. After verifying the image, he excitedly contacted his fellow team members with the exciting news. It was the biological equivalent of winning the lottery.

The stunning photos of the cat named P-22 by the National Park Service (NPS) captivated the public who were astonished to realize that the big cat had been living relatively unnoticed in the remote areas of

Griffith Park for some time. The nature of mountain lions and other predators is to avoid human contact and live a solitary existence.

But when the elusive feline was discovered resting under the crawlspace of a Los Feliz home in April of this year, it created a frenzy of live news reports and sparked a public interest in finding out more about P-22 and his possible relatives in the area.

Kate Kuykendall, public information officer for the Santa Monica Mountains Recreation Area, says the National Park Service has been studying mountain lions in and around the Santa Monica Mountains since 2002 to determine how they survive as their territory becomes increasingly urbanized by new home and

*(cont'd on page 21)*

**Just Say  
NO  
To The Not-So  
Greatest Show on Earth  
Join The Protests  
July 9-14**